

SPECTOR^{module}

The modular system for a multitude of applications

Conductive Level Switch NRS 1-5

The four different switches of this series can be used as simple level switches/limiters or as on/off level controllers. The sensitivity can be adjusted and the control mode can be changed over between fill and discharge. For the electrodes, the tried-and-tested GESTRA probes are used.



Capacitive Level Switch NRS 2-5...

The switches of this series function both in conjunction with the proven capacitive probes and also with the level transmitters of the SPECTOR^{compact} line. The actual-value current output (available as an option) replaces the level transmitter. The intuitive, language-neutral, menu-based operating is performed with the aid of a rotary pushbutton. The values are indicated on a 4-digit 7-segment display. The 100% range setting can be made from a filling level of 25%.



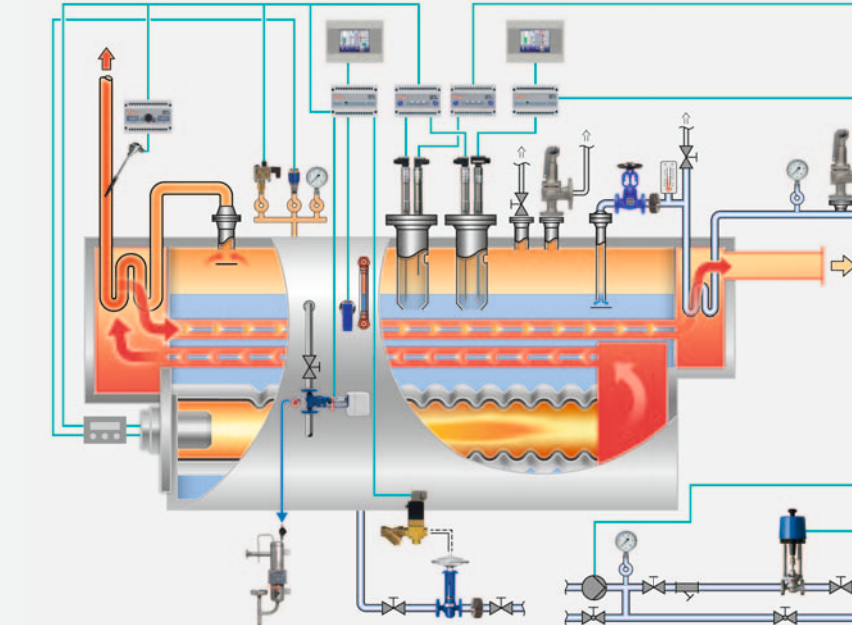
Capacitive Level Controller NRR 2-5...

The controllers of this series function both in conjunction with the usual capacitive probes and also with the level transmitters of the SPECTOR^{compact} line. The series now also offers a modulating control output for pneumatic valves. The intuitive, language-neutral, menu-based operating is performed with the aid of a rotary pushbutton. The values are indicated on a 4-digit 7-segment display. The 100% range setting can already be made from a filling level of 25%.



Conductivity Switch and Controller

The tried-and-tested conductivity switch LRS 1-50 signals excessively high or low conductivity in the boiler and can be used to actuate a simple valve. The controllers of this series, LRR 1-5..., work either in conjunction with a simple conductivity electrode and a separate temperature sensor or with a conductivity transmitter of the SPECTOR^{compact} series. Operating and display is clear and user-friendly, and has been adapted to the level controllers. All controllers are fitted with an actual-value output.



SPECTOR^{module} at a Glance

- Compatible to the conventional systems
- Power supply generally 24 VDC
- Other voltages with a separate power supply unit
- Switchable sensitivity: 0.5 or 10 $\mu\text{S}/\text{cm}$
- Same dimensions as the SPECTOR^{compact} versions
- All units with extended functionality
- Now also as modulating controller
- Consistent, language-neutral, intuitive operating
- SPECTOR^{module} Touch with separate control unit and greatly extended functionality
- Now also as modulating controller and three-element control
- All limiter systems with SIL 3 certification
- Conductivity control system according to VdTÜV "WÜ 100"

Tell me more!

- ☐ Please send me brochure on boiler equipment
- ☐ Data sheet
- ☐ Information on the entire GESTRA product portfolio
- ☐ Equipment comparison OLD/NEW
- ☐ Poster on boiler equipment
- ☐ Please contact me



Company _____

Name _____

Street and house number _____

Postal code and city _____

Telephone and e-mail (to arrange a meeting) _____

Reply

GESTRA AG
Münchener Strasse 77
28215 Bremen
Germany

Affix
stamp
here

SPECTORmodule The New Controller Family from GESTRA

SPECTORmodule Compact und SPECTORmodule Touch



SPECTORmodule Compact The modular system for effective control

Self-Monitoring Temperature Limiter TRS 5-50 (SIL 3)

The new self-monitoring temperature switch is certified as SIL 3 according to EN 12952/53. The switch is self-monitoring, periodically conducts self-tests and has two channels. Operating with a Pt100 temperature sensor, it constantly indicates both the actual and the set temperature. As an option, the switch can be supplied with an actual-value temperature output.



Temperature Switch TRS 5-52

This switch works in conjunction with a Pt100 temperature sensor and signals MIN and MAX temperatures. A typical application is the return temperature elevation in hot-water plants.

The intuitive, language-neutral, menu-based operating is performed with the aid of a rotary pushbutton. The values are indicated on a 4-digit 7-segment display.



SPECTORmodule Touch Operating and performance at the highest level

Capacitive Level Controller NRR 2-52 and 2-53

The controllers of this series function both in conjunction with the usual capacitive probes and also with the level transmitters of the SPECTORcompact line. The series now also offers a modulating control output for pneumatic valves. Optionally, the unit can be supplied as a three-element controller. The intuitive, language-neutral, menu-based operating is performed with a separate touch panel (URB 50). In addition to the set points and actual values, it also displays trend values, error messages and limits. The 100% range setting can already be made from a filling level of 25%. As an option, an actual-value current output is also available for remote level indication.



Continuous Blowdown Controller LRR 1-52 and 1-53

The controllers of the series LRR 1-5.. operate either in conjunction with a simple conductivity electrode and a separate temperature sensor or with a conductivity transmitter of the SPECTORcompact series. As with the level controller, operating takes place through a separate touch panel (URB 50). In addition to the set points and actual values, it also displays trend values, error messages and limits. The controllers are optimized for operation with continuous blowdown valves of the series BAE 46/47 or 210. All units have, as standard supply, an actual-value current output and offer an intermittent blowdown timer function and a standby input.



GESTRA AG

Münchener Strasse 77, D-28215 Bremen
P.O. Box 10 54 60, D-28054 Bremen
Telephone +49 (0) 421-35 03-0
Telefax +49 (0) 421-35 03-393
E-mail gestra.ag@flowserve.com
Internet www.gestra.de

819201-00/412 · © 2012 · GESTRA AG · Bremen · Printed in Germany



With Energy into the Future



Experience In Motion